

Trouble-shooting in case of network license problems

(The software cannot be launched, no license is found...)

Overview

Problems with your network license can be caused by:

- Problems with the **drivers of the protection key** (dongle protecting the network license).
- Problems with the "**Sentinel LDK License Manager** (hsplms)" service.
- Problems with the "**Hasp Loader**" service.
- Problems with the **Firewall** or an **antivirus program**.

Prerequisites

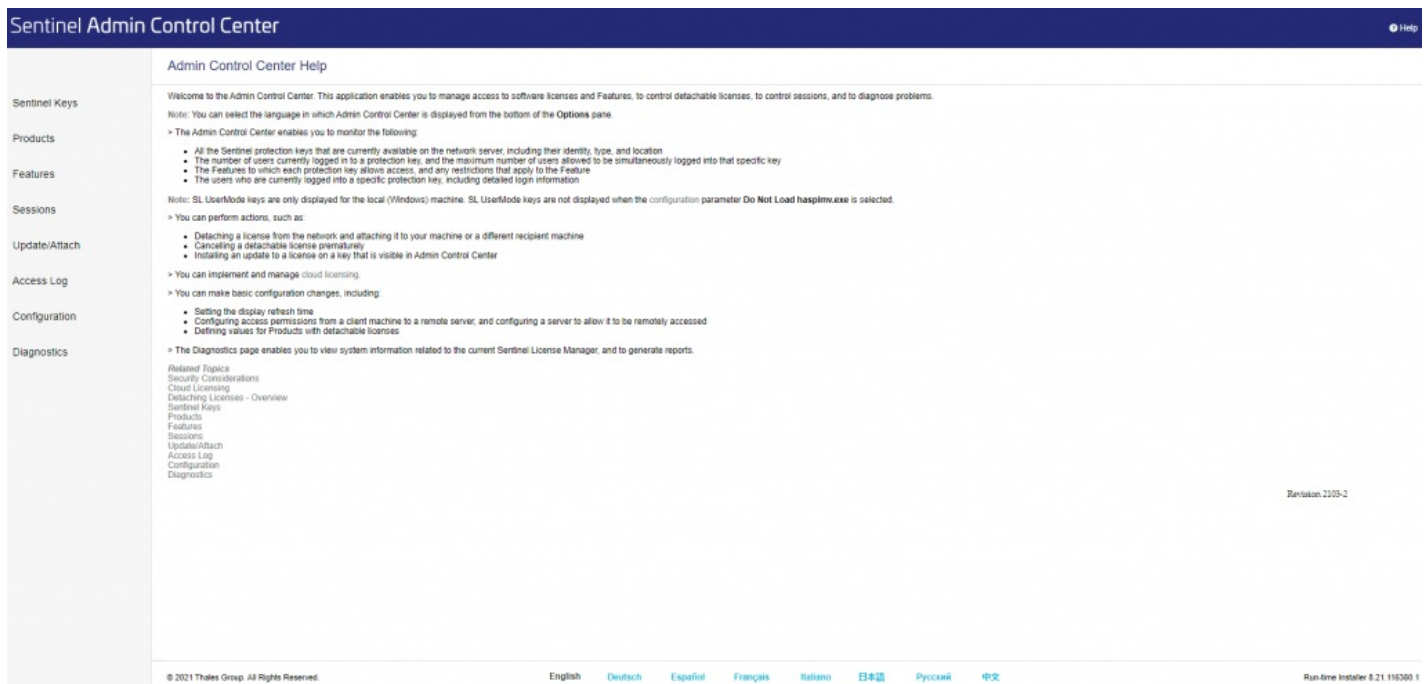
- Verify that no other applications are running.
- You need administrator rights. If you are not administrator of your computer, get help from your IT manager.

Basic trouble-shooting

1. Make sure that the computer/server hosting the protection key is switched on.
2. Make sure that the protection key is working (a red light on the key indicates that it is recognized and working).
3. Make sure that you have access to the **Sentinel Admin Control Center**:

On the computer/server hosting the protection key: Enter <http://localhost:1947> in your Internet browser.

-> The "Sentinel Admin Control Center" should be displayed.



Sentinel Admin Control Center Help

Welcome to the Admin Control Center. This application enables you to manage access to software licenses and Features, to control detachable licenses, to control sessions, and to diagnose problems.

Note: You can select the language in which Admin Control Center is displayed from the bottom of the **Options** pane.

> The Admin Control Center enables you to monitor the following:

- All the Sentinel protection keys that are currently available on the network server, including their identity, type, and location
- The number of users currently logged in to a protection key, and the maximum number of users allowed to be simultaneously logged into that specific key
- The Features to which each protection key allows access, and any restrictions that apply to the Feature
- The users who are currently logged into a specific protection key, including detailed login information

Note: SL UserMode keys are only displayed for the local (Windows) machine. SL UserMode keys are not displayed when the configuration parameter **Do Not Load hasplm.exe** is selected.

> You can perform actions, such as:

- Detaching a license from the network and attaching it to your machine or a different recipient machine
- Cancelling a detachable license prematurely
- Installing an update to a license on a key that is visible in Admin Control Center

> You can implement and manage cloud licensing.

> You can make basic configuration changes, including:

- Setting the display refresh time
- Configuring access permissions from a client machine to a remote server, and configuring a server to allow it to be remotely accessed
- Defining values for Products with detachable licenses

> The **Diagnostics** page enables you to view system information related to the current Sentinel License Manager, and to generate reports.

Related Topics
Security Considerations
Cloud Licensing
Detaching Licenses - Overview
Sentinel Keys
Products
Features
Sessions
Update/Attach
Access Log
Configuration
Diagnostics

© 2021 Thales Group. All Rights Reserved. English Deutsch Español Français Italiano 日本語 Русский 中文

Run-time Installer 8.21.116380.1

If there is a problem, make sure that the **most recent driver is correctly installed**. [Advanced information...](#)

Advanced trouble-shooting

Note: It might be a good idea to get help from your IT manager.

4. Find and stop conflicting **services** ("Sentinel LDK License Manager (hasplms)" and "Hasp Loader")

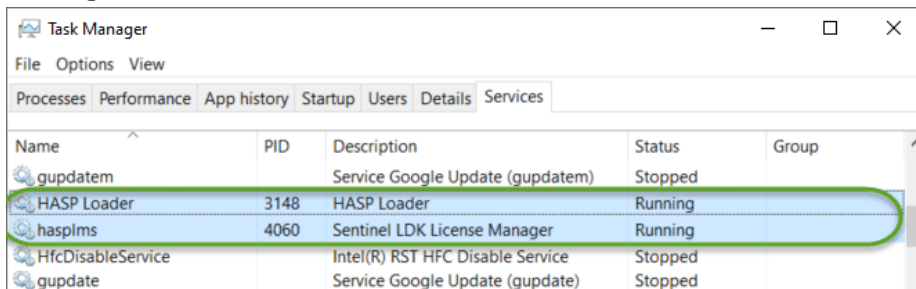
The following services must be running:

- **"hasplms"** ("Sentinel LDK License Manager"), and
- **"HASP Loader"** ("HASP License Manager").

Note: The "HASP Loader" service is NOT necessary if your protection key is "driverless". [Learn how to verify if your protection key is "driverless"...](#)

Check if these services are listed and running:

1. Click on the Windows Start button.
2. Type **"taskmgr"**, and press Enter. The "Windows Task Manager" is displayed.
3. Find the services **"hasplms"** ("Sentinel LDK License Manager"), and **"HASP Loader"** ("HASP License Manager"), and check if their status is **"Running"**.



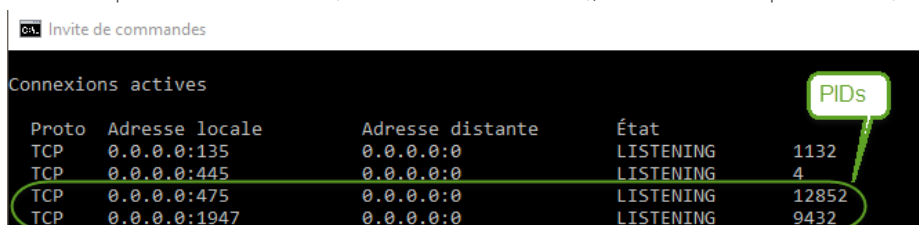
Name	PID	Description	Status	Group
gupdatem		Service Google Update (gupdatem)	Stopped	
HASP Loader	3148	HASP Loader	Running	
hasplms	4060	Sentinel LDK License Manager	Running	
HfcDisableService		Intel(R) RST HFC Disable Service	Stopped	
gupdate		Service Google Update (gupdate)	Stopped	

If the services are not listed, try to find out if there are conflicting services:

If the "hasplms" and HASP Loader" services are not listed, get help from your IT manager, to find out if another service is running on the respective port:

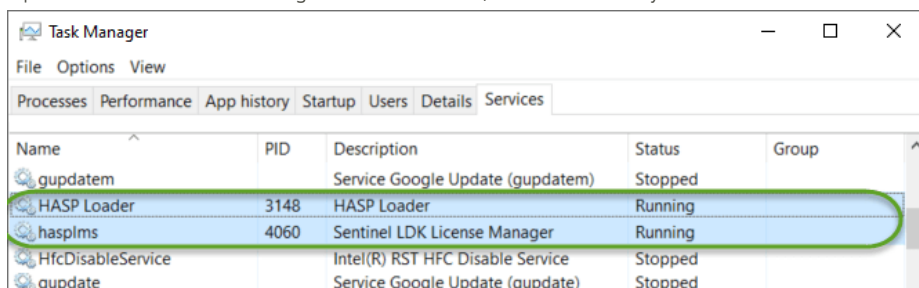
- **Port TCP 1947** is needed to run the **"hasplms"** service ("Sentinel LDK License Manager")
- **Port UDP 475 and TCP 475** is needed to run the **"HASP Loader"** service ("HASP License Manager")

1. Open the "Command Prompt" window.
2. Type **"netstat -aon|more"** and press Enter. A list of ports is displayed.
3. Find the respective local addresses (0.0.0.0:1947 and 0.0.0.0:475), and record the respective PIDs (in the last column).



Proto	Adresse locale	Adresse distante	État	PIDs
TCP	0.0.0.0:135	0.0.0.0:0	LISTENING	1132
TCP	0.0.0.0:445	0.0.0.0:0	LISTENING	4
TCP	0.0.0.0:475	0.0.0.0:0	LISTENING	12852
TCP	0.0.0.0:1947	0.0.0.0:0	LISTENING	9432

4. Open the "Windows Task Manager" > "Services" tab, and use the PIDs you recorded to find out if another service is running instead.



Name	PID	Description	Status	Group
gupdatem		Service Google Update (gupdatem)	Stopped	
HASP Loader	3148	HASP Loader	Running	
hasplms	4060	Sentinel LDK License Manager	Running	
HfcDisableService		Intel(R) RST HFC Disable Service	Stopped	
gupdate		Service Google Update (gupdate)	Stopped	

Note: If another service is running on the respective PID, right-click on the row and click "Stop Service". This will stop the conflicting service for the current Windows session. Ask your IT manager to remove or stop the conflicting services permanently or to run them on a different port.

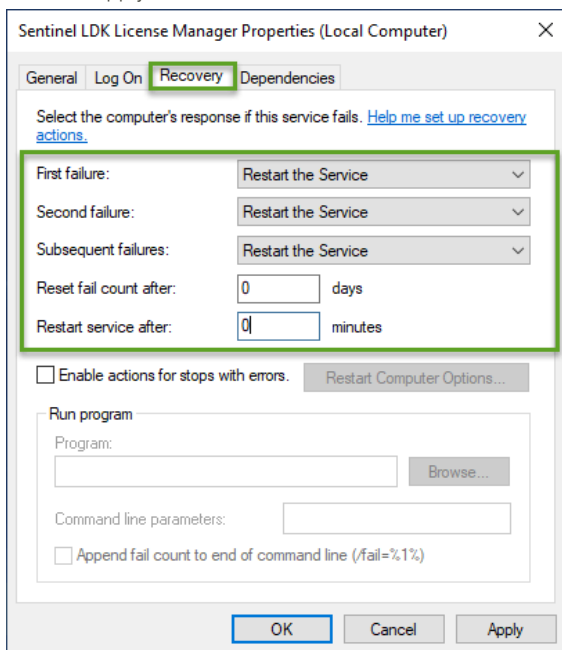
If the services are listed but are not running, try to re-start them:

Use the "Windows Task Manager" or the "Services" window, to start or re-start the services.

If this fails (service has been running, but the problem occurs again):

1. Right-click on the "Sentinel LDK License Manager" service (in the "Services" window), choose "Properties", and define the following settings in the [Recovery] tab:
 - First failure: Restart the Service
 - Second failure: Restart the Service
 - Subsequent failures: Restart the Service

- Restart service after: 0 minutes
- Click on [Apply], and then on [OK].



5. Verify the configuration of your **Firewall**

Tip: You might want to temporarily turn the Firewall off, in order to see if the problem is Firewall-related or not.

Normally, installation (as explained in "[How to install and use a network license](#)") configures the firewall as necessary, adding the following "Allow" rules:

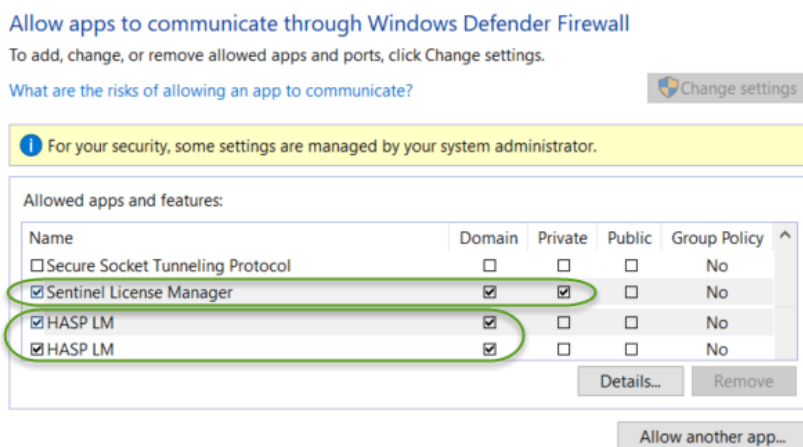
- A "**Sentinel License Manager**" rule to allow the application access through all ports (normally, port 1974 will be used).
- Two "**HASP LM**" rules, one defining **incoming port 475 in TCP, and one in UDP**.

Note: This works well with the Windows firewall. In case of a problem, or when using another firewall, verify the above mentioned points.

To verify your **firewall rules** (when using the Windows firewall):

"**Sentinel License Manager**" and "**HASP LM**" must be part of the "**Allowed apps and features**":

- Click on the Windows **Start** button, and type "**Firewall**".
- Click on "Allow an app through firewall". The following dialog is displayed:



- Verify that the "**Sentinel License Manager**" app is allowed on your respective networks (for example "Domain" and "Private" network).
- Verify that 2 "**HASP LM**" apps are allowed on your respective networks (for example "Domain").

Make also sure that no **antivirus** software is blocking one of the apps or services.

Restart the software.

6. If you still have problems, please contact the Support team (support@digitalsurf.com).

Digital Surf Headquarters

16 rue Lavoisier, 25000 Besançon,
France

Phone: +33 38150 4800

E-mail: contact@digitalsurf.com

©1996-2022 Digital Surf. All rights reserved.